

Preliminary Prepayments

A series view of reported CK93 numbers

-> **Totals, historic payments and current estimated scale factor**

-> **Percentages (%)**

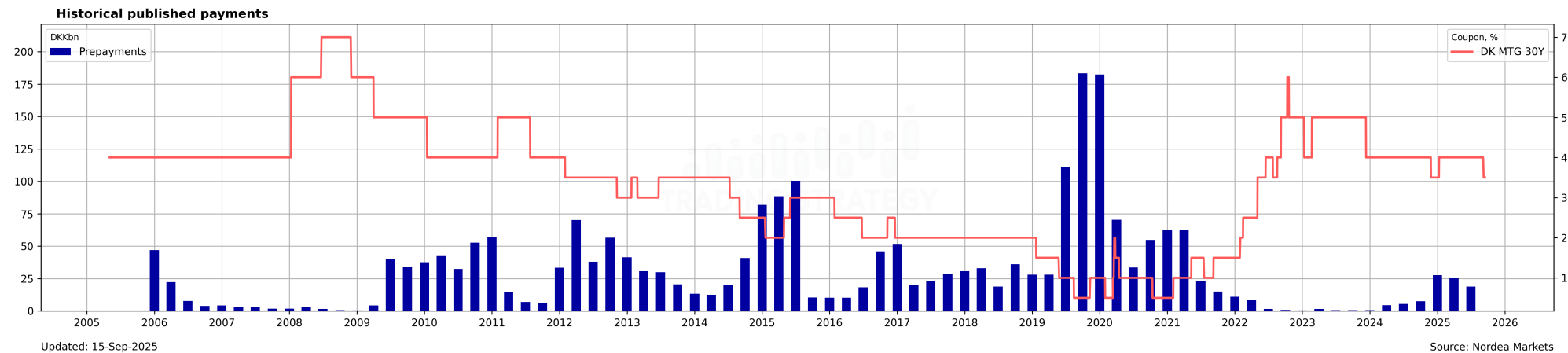
-> **Amounts (DKKm)**

Christian Kjær
Trading Strategy, Associate Director
+45 5547 1009
christian.kjar@nordea.com

Anders Skytte Aalund
Head of Trading Strategy, Director
+45 5547 1854
anders.aalund@nordea.com

Prepayments overview

Historical Prepayments, Totals overview and regressed prepayment factors up to notification



Preliminary Prepayments for January-2026

Numbers in DKKm	NDA	NYK	RD	JYKRE	DLR	Total
Callables (incl.)	476	1,975	443	148	45	3,088
Callables (All)	484	1,993	450	150	47	3,125
Floater	96	194	2	2	-	294
Total	581	2,186	452	153	47	3,418

Updated: 15-Sep-2025

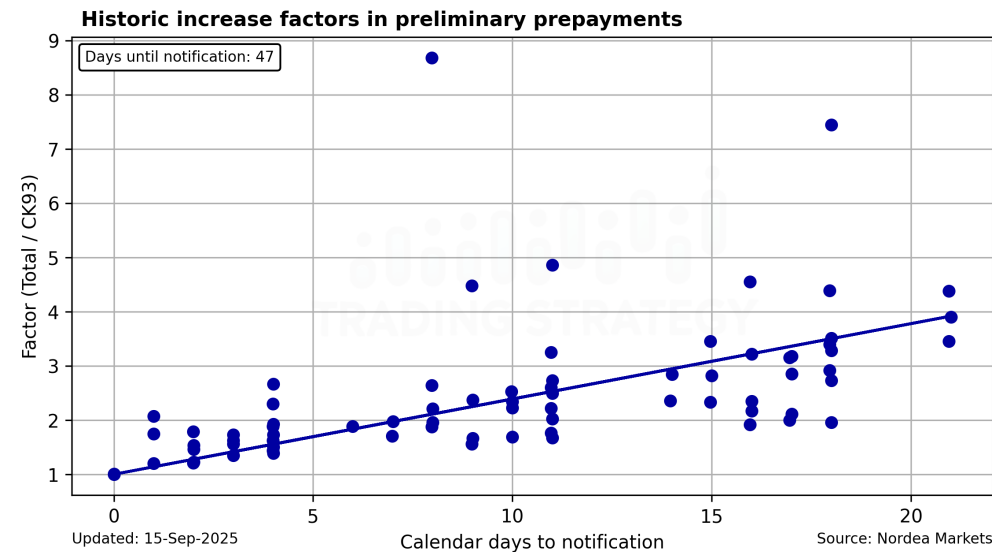
Source: Nordea Markets

Preliminary Prepayments for October-2025

Numbers in DKKm	NDA	NYK	RD	JYKRE	DLR	Total
Callables (incl.)	2,369	11,544	3,195	1,372	251	18,731
Callables (All)	2,397	11,612	3,230	1,383	280	18,902
Floater	14	381	41	42	14	492
Total	2,410	11,993	3,272	1,425	294	19,394

Updated: 18-Aug-2025

Source: Nordea Markets



Preliminary Prepayments (%) for Jan-01 2026

Series	NDA	Δweek	NYK	Δweek	RD	Δweek	JYKRE	Δweek	DLR	Δweek	NDA Last term	Pool Factor	NYK Last term	Pool Factor	RD Last term	Pool Factor	JYKRE Last term	Pool Factor	DLR Last term	Pool Factor
10Y series																				
3.0 33			0.6%	0.1%									4.1%	68.5%						
15Y series																				
2.0 29	0.1%	0.0%	0.1%	0.0%	0.3%	0.1%	-	-			1.7%	2.0%	1.0%	2.2%	1.1%	2.9%	1.9%	2.8%		
2.0 32	-	-	0.4%	0.0%	-	-	-	-			1.5%	4.7%	0.3%	7.1%	1.8%	5.3%	0.5%	5.1%		
20Y series																				
3.0 31	-	-	0.1%	-	-	-	-	-	-	-	5.0%	1.2%	0.3%	6.7%	-	1.0%	-	5.7%	-	1.8%
2.5 34	0.4%	0.1%			0.4%	0.1%	-	-	-	-	1.9%	4.7%			0.5%	3.6%	0.8%	4.6%	1.9%	4.4%
3.0 34	0.2%	0.0%	1.0%	0.3%	0.4%	0.2%	-	-	-	-	2.0%	2.4%	1.2%	2.3%	1.7%	2.2%	0.5%	2.4%	2.5%	2.1%
2.0 37	-	-	0.0%	0.0%	-	-	-	-	-	-	0.0%	9.6%	-	9.4%	-	7.5%	-	6.7%	-	11.2%
2.5 37	-	-	-	-	-	-	-	-	-	-	-	6.5%	0.0%	5.9%	-	4.3%	-	3.2%	0.2%	5.8%
2.5 43									-	-									-	73.0%
3.0 43	-	-	-	-	-	-	-	-			-	71.3%	-	67.9%	-	73.6%	-	67.0%		
4.0 43	0.7%	0.1%	1.2%	0.4%	0.6%	0.0%					2.3%	79.9%	4.1%	77.9%	3.2%	80.0%				
5.0 43			1.5%	0.2%									7.7%	68.1%						
4.0 46	0.7%	0.1%	0.3%	0.0%	0.4%	0.1%	0.4%	0.1%	0.1%	-0.0%	2.0%	97.6%	3.3%	98.0%	2.6%	96.9%	0.6%	97.4%	0.1%	99.9%
5.0 46	6.4%	0.0%	0.9%	0.1%			0.6%	0.2%	0.3%	0.0%	7.5%	84.7%	9.8%	79.3%			4.0%	77.8%	5.5%	89.6%
30Y series																				
3.0 44	0.9%	0.1%	0.1%	0.0%	0.2%	-	0.1%	0.0%	-	-	1.2%	2.7%	0.8%	3.0%	0.3%	2.5%	1.0%	1.2%	-	2.9%
3.0 44 IO	0.4%	0.0%	0.1%	0.0%	-	-	-	-	-	-	3.2%	1.3%	0.6%	2.5%	0.8%	1.9%	6.7%	1.7%	16.3%	1.7%
3.5 44	0.6%	0.0%	0.1%	0.0%	0.2%	0.1%	0.3%	-	-	-	1.3%	1.7%	1.8%	2.2%	2.7%	2.1%	1.5%	2.4%	0.7%	2.2%
3.5 44 IO	1.4%	0.0%	0.5%	0.0%	0.3%	0.1%	0.9%	0.0%	2.5%	-	3.0%	0.8%	2.5%	1.7%	2.3%	1.3%	3.2%	1.9%	9.3%	1.2%
2.5 47	-	-	-	-	-	-	-	-	-	-	-	5.8%	0.0%	6.0%	-	5.2%	-	4.7%	-	6.0%
2.5 47 IO	-	-	0.0%	0.0%	-	-	-	-	-	-	-	3.4%	0.0%	4.1%	-	3.1%	-	2.8%	-	3.5%
3.0 47	-	-	0.1%	-	-	-	-	-	-	-	0.2%	3.5%	0.0%	3.6%	-	2.6%	0.8%	2.7%	-	3.8%
3.0 47 IO	-	-	-	-	-	-	-	-	-	-	2.5%	1.6%	0.3%	2.1%	-	2.0%	-	1.6%	-	1.4%
3.0 53	-	-	-	-	-	-	-	-	-	-	-	65.6%	-	48.9%	-	51.6%	-	60.5%	-	76.4%
3.0 53 IO	-	-	-	-	-	-	-	-	-	-	-	58.3%	-	54.3%	-	54.3%	-	65.2%	-	68.5%
3.0 53 30Y IO	-	-	-	-	-	-	-	-	-	-	-	82.6%	-	84.0%	-	91.5%	-	75.8%		
3.5 53			-	-									-	67.1%						
3.5 53 IO	-	-	-	-			-	-			-	69.9%	-	66.1%			-	69.3%		
4.0 53	1.3%	0.3%	0.9%	0.2%	0.5%	0.1%	0.4%	0.0%	-	-	3.3%	78.1%	2.8%	76.9%	2.1%	78.5%	1.7%	78.5%	0.3%	82.1%
4.0 53 IO	0.5%	0.0%	0.3%	0.1%	0.5%	0.3%	0.5%	0.2%	0.4%	-	2.0%	80.7%	1.4%	77.9%	0.9%	73.5%	1.6%	74.9%	-	76.9%
4.0 53 30Y IO	-	-	-	-	0.2%	0.0%	-	-			-	87.4%	0.4%	91.1%	0.2%	90.0%	-	92.1%		
5.0 53	2.3%	0.5%	1.8%	0.4%	1.3%	0.3%			0.7%	0.1%	9.7%	62.0%	10.1%	65.8%	9.3%	62.8%			5.0%	71.6%
5.0 53 IO	2.5%	0.9%	2.3%	0.6%	1.6%	0.4%			0.8%	0.0%	15.1%	47.4%	12.7%	60.1%	11.8%	58.0%			4.1%	68.7%
5.0 53 30Y IO	1.3%	0.5%	1.1%	0.1%							6.7%	60.9%	5.3%	78.1%						
6.0 53			4.0%	0.6%	3.7%	0.3%							20.1%	24.1%	16.1%	26.0%				
6.0 53 IO			3.7%	0.7%	3.0%	0.6%							18.6%	19.0%	21.8%	12.4%				
4.0 56	0.1%	0.0%	0.0%	0.0%	0.0%	0.0%	-	-	-	-	0.1%	100.0%	0.1%	100.0%	0.1%	100.0%	-	100.0%	-	100.0%
4.0 56 IO	-	-	-	-	0.0%	-	-	-	0.3%	-0.0%	0.1%	100.0%	0.0%	100.0%	0.0%	100.0%	-	100.0%	-	100.0%
4.0 56 30Y IO	-	-	-	-	-	-	-	-			-	100.0%	-	100.0%	0.1%	100.0%	-	100.0%		
5.0 56	1.8%	0.4%	2.0%	0.6%	1.5%	0.3%	1.3%	0.5%	1.6%	0.3%	10.5%	69.5%	10.2%	71.6%	11.1%	70.0%	11.4%	71.9%	5.5%	76.3%
5.0 56 IO	1.8%	0.5%	2.0%	0.5%	1.8%	0.5%	1.0%	0.3%	0.9%	0.0%	14.6%	55.5%	12.1%	67.8%	11.5%	67.1%	9.8%	70.3%	6.6%	46.4%
5.0 56 30Y IO	0.3%	0.0%	2.1%	0.8%	-	-	1.1%	0.7%			5.4%	81.8%	5.1%	82.9%	7.3%	82.8%	8.4%	77.8%		
6.0 56 IO							6.1%	3.6%									24.7%	14.7%		

Report date: 15-Sep 2025

Source: Nordea Markets

Preliminary Prepayments (DKKm) for Jan-01 2026

Series	NDA	Δweek	NYK	Δweek	RD	Δweek	JYKRE	Δweek	DLR	Δweek	NDA Last term	Pool Factor	NYK Last term	Pool Factor	RD Last term	Pool Factor	JYKRE Last term	Pool Factor	DLR Last term	Pool Factor
10Y series																				
3.0 33			6.5	1.4									43.1	68.5%						
15Y series																				
2.0 29	0.1	0.0	0.2	0.0	0.6	0.2	-	-			1.6	2.0%	2.0	2.2%	2.5	2.9%	0.9	2.8%		
2.0 32	-	-	0.5	0.0	-	-	-	-			0.6	4.7%	0.5	7.1%	1.5	5.3%	0.2	5.1%		
20Y series																				
3.0 31	-	-	0.2	-	-	-	-	-	-	-	0.5	1.2%	0.6	6.7%	-	1.0%	-	5.7%	-	1.8%
2.5 34	0.8	0.3			1.4	0.2	-	-	-	-	4.4	4.7%			1.8	3.6%	0.7	4.6%	1.1	4.4%
3.0 34	0.3	0.0	2.7	0.8	1.0	0.6	-	-	-	-	3.3	2.4%	3.2	2.3%	4.3	2.2%	0.3	2.4%	1.5	2.1%
2.0 37	-	-	0.5	0.0	-	-	-	-	-	-	0.2	9.6%	-	9.4%	-	7.5%	-	6.7%	-	11.2%
2.5 37	-	-	-	-	-	-	-	-	-	-	-	6.5%	0.1	5.9%	-	4.3%	-	3.2%	0.2	5.8%
2.5 43									-	-									-	73.0%
3.0 43	-	-	-	-	-	-	-	-			-	71.3%	-	67.9%	-	73.6%	-	67.0%		
4.0 43	15.4	1.5	37.8	12.2	14.8	0.7					55.7	79.9%	134.1	77.9%	82.8	80.0%				
5.0 43			57.8	6.5									320.3	68.1%						
4.0 46	10.8	0.8	23.2	2.7	9.5	2.2	5.4	1.7	1.0	0.0	29.7	97.6%	256.3	98.0%	63.3	96.9%	8.0	97.4%	2.3	99.9%
5.0 46	11.7	0.0	8.8	0.9			8.3	2.6	1.3	0.0	14.8	84.7%	110.9	79.3%			53.6	77.8%	26.9	89.6%
30Y series																				
3.0 44	4.5	0.3	0.5	0.3	1.1	-	0.1	0.0	-	-	6.5	2.7%	6.1	3.0%	1.8	2.5%	1.6	1.2%	-	2.9%
3.0 44 IO	0.6	0.0	0.9	0.0	-	-	-	-	-	-	4.5	1.3%	3.8	2.5%	2.0	1.9%	3.6	1.7%	1.2	1.7%
3.5 44	1.9	0.0	0.9	0.0	1.0	0.4	0.3	-	-	-	4.6	1.7%	11.5	2.2%	14.4	2.1%	1.8	2.4%	0.4	2.2%
3.5 44 IO	1.6	0.0	2.9	0.0	0.9	0.4	0.7	0.0	0.3	-	3.6	0.8%	15.5	1.7%	7.3	1.3%	2.5	1.9%	1.3	1.2%
2.5 47	-	-	-	-	-	-	-	-	-	-	-	5.8%	0.8	6.0%	-	5.2%	-	4.7%	-	6.0%
2.5 47 IO	-	-	0.7	0.0	-	-	-	-	-	-	-	3.4%	0.5	4.1%	-	3.1%	-	2.8%	-	3.5%
3.0 47	-	-	0.4	-	-	-	-	-	-	-	0.5	3.5%	0.3	3.6%	-	2.6%	1.1	2.7%	-	3.8%
3.0 47 IO	-	-	-	-	-	-	-	-	-	-	2.8	1.6%	1.3	2.1%	-	2.0%	-	1.6%	-	1.4%
3.0 53	-	-	-	-	-	-	-	-	-	-	-	65.6%	-	48.9%	-	51.6%	-	60.5%	-	76.4%
3.0 53 IO	-	-	-	-	-	-	-	-	-	-	-	58.3%	-	54.3%	-	54.3%	-	65.2%	-	68.5%
3.0 53 30Y IO	-	-	-	-	-	-	-	-	-	-	-	82.6%	-	84.0%	-	91.5%	-	75.8%		
3.5 53			-	-									-	67.1%						
3.5 53 IO	-	-	-	-			-	-			-	69.9%	-	66.1%			-	69.3%		
4.0 53	71.2	17.8	168.6	32.2	33.3	7.9	7.1	0.2	-	-	189.0	78.1%	572.6	76.9%	135.3	78.5%	35.0	78.5%	2.5	82.1%
4.0 53 IO	13.0	0.0	17.3	8.1	27.8	19.7	8.2	2.5	1.4	-	49.7	80.7%	86.5	77.9%	54.6	73.5%	27.2	74.9%	-	76.9%
4.0 53 30Y IO	-	-	-	-	2.6	0.0	-	-			-	87.4%	3.7	91.1%	3.4	90.0%	-	92.1%		
5.0 53	170.6	40.7	722.2	168.4	119.9	29.4			14.6	1.1	800.6	62.0%	4426.7	65.8%	941.8	62.8%			110.1	71.6%
5.0 53 IO	73.1	25.9	313.7	83.1	99.5	22.0			4.7	0.0	530.7	47.4%	1938.9	60.1%	838.5	58.0%			24.6	68.7%
5.0 53 30Y IO	10.2	4.0	16.9	1.5							55.6	60.9%	87.5	78.1%						
6.0 53			43.7	6.8	13.8	1.1							272.9	24.1%	71.0	26.0%				
6.0 53 IO			20.2	3.9	7.0	1.5							123.0	19.0%	65.4	12.4%				
4.0 56	12.9	6.3	20.8	9.0	2.3	2.3	-	-	-	-	9.7	100.0%	72.8	100.0%	11.3	100.0%	-	100.0%	-	100.0%
4.0 56 IO	-	-	-	-	0.4	-	-	-	3.4	0.0	7.4	100.0%	12.3	100.0%	0.2	100.0%	-	100.0%	-	100.0%
4.0 56 30Y IO	-	-	-	-	-	-	-	-			-	100.0%	-	100.0%	3.8	100.0%	-	100.0%		
5.0 56	51.5	12.3	354.6	100.4	50.6	10.0	63.8	22.6	14.5	2.2	333.2	69.5%	2039.5	71.6%	423.3	70.0%	623.5	71.9%	51.9	76.3%
5.0 56 IO	25.2	7.7	135.5	37.5	55.8	16.3	38.7	11.8	3.6	0.0	241.4	55.5%	951.7	67.8%	408.2	67.1%	410.9	70.3%	26.8	46.4%
5.0 56 30Y IO	1.1	0.0	16.8	6.7	-	-	6.8	4.5			18.0	81.8%	43.3	82.9%	56.6	82.8%	55.2	77.8%		
6.0 56 IO							5.4	3.2									29.2	14.7%		

Report date: 15-Sep 2025

Source: Nordea Markets

DISCLAIMER

Nordea Markets is the commercial name for Nordea's international capital markets operation.

The information provided herein is intended for background information only and for the sole use of the intended recipient. The views and other information provided herein are the current views of Nordea Markets as of the date of this document and are subject to change without notice. This notice is not an exhaustive description of the described product or the risks related to it, and it should not be relied on as such, nor is it a substitute for the judgement of the recipient.

The information provided herein is not intended to constitute and does not constitute investment advice nor is the information intended as an offer or solicitation for the purchase or sale of any financial instrument. The information contained herein has no regard to the specific investment objectives, the financial situation or particular needs of any particular recipient. Relevant and specific professional advice should always be obtained before making any investment or credit decision. It is important to note that past performance is not indicative of future results.

Nordea Markets is not and does not purport to be an adviser as to legal, taxation, accounting or regulatory matters in any jurisdiction.

This document may not be reproduced, distributed or published for any purpose without the prior written consent from Nordea Markets.

In the United States, to the extent that this publication or report includes an analysis of the price or market for any derivative and is not otherwise exempt from the applicable U.S. Commodity Futures Trading Commission (CFTC) regulations, it is approved for distribution in the United States to US persons that are eligible contract participants from a CFTC perspective. Nordea Bank Abp is a provisionally registered swap dealer with the CFTC. Any derivatives transactions with US persons must be effected in accordance with the provisions of the Dodd-Frank Wall Street Reform and Consumer Protection Act.

Nordea Bank Abp, Satamaradankatu 5, FI - 00020 NORDEA, Finland, domicile Helsinki, Business ID 2858394 - 9

Further information on Nordea available on www.nordea.com